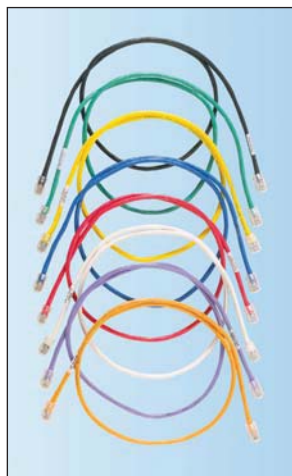


c TX5e™ UTP Patch Cords

- Exceed ANSI/TIA-568-C.2 Category 5e and ISO 11801 Class D standards
- Meet requirements of IEEE 802.3af and IEEE 802.3at for PoE applications
- Color-coded, keyed modular plugs mechanically and visually distinguish connections to prevent unintentional mating with unlike keyed or non-keyed jack modules accommodating more discrete networks
- Each patch cord is 100% performance tested and wired to T568A
- Constructed of Category 5e, 24 AWG UTP stranded cable and Pan-Plug® Modular Plugs; plug contacts plated with 50 microinches of gold for superior performance
- Plug meets all applicable ANSI/TIA/EIA-968-A requirements and exceeds IEC 60603-7 specifications
- Patented tangle-free latch prevents snags and provides easy release, saving time on frequent moves, adds, and changes
- Labels on patch cords provide identification of performance level, length, and quality control number
- Optional patch cord color bands snap on and off individual patch cables offering endless color-coding options
- Optional RJ45 plug lock-in device blocks unauthorized removal of cable, IP phone, other networking equipment, or critical connection
- Third party tested to Category 5e component compliance



Part Number	Part Description	Length (Ft.)	Cable Color	Std. Pkg. Qty.	Std. Ctn. Qty.
-------------	------------------	--------------	-------------	----------------	----------------

Non-Keyed Patch Cords

UTPCH3Y‡	Category 5e, UTP patch cord with Pan-Plug™ Modular Plugs on each end.	3	Off White	1	10
-----------------	---	---	-----------	---	----

Keyed Patch Cords

UTPKCH3BL*	Keyed, Category 5e, UTP patch cord with Pan-Plug™ Keyed Modular Plug on one end and Pan-Plug™ Non-Keyed Modular Plug on the other end.	3	Black	1	10
-------------------	--	---	-------	---	----

‡For lengths 1 to 20 feet (increments of one foot) and 25, 30, 35, 40 feet change the length designation in the part number to the desired length. For standard cable colors other than Off White, add suffix BL (Black), BU (Blue), GR (Green), RD (Red), YL (Yellow), OR (Orange), or VL (Violet) before the Y in the part number. For example, the part number for a blue 15-foot patch cord is UTPCH15BUY.

*For lengths other than 3 feet (5, 7, 10, 14 feet) change the length designation in the part number to the desired length. For standard cable colors other than Black, replace suffix BL (Black) with BU (Blue), RD (Red), YL (Yellow), GR (Green), or OR (Orange), each color representing a different keyed configuration.

Contact customer service for universal reference patch cords.

Patch cord color bands available on page B.91 of SA-NCCB51.

RJ45 plug lock-in device available on page B.89 of SA-NCCB51.

Labels for TX5e™ UTP Patch Cords



Suggested Label Solutions for TIA/EIA-606-A Compliance

Patch Cord Part Number	Laser/Ink Jet Desktop Printer Label	TDP43ME Thermal Transfer Desktop Printer Label	PanTher™ LS8E Hand-Held Printer Label	Cougar™ LS9 Hand-Held Printer Label
All Patch Cords	S100X150YAJ	S100X150VATY	S100X150VAC	T100X000CBC-BK

For complete labeling solutions and product information, reference charts on pages O.1 – O.22 of SA-NCCB51.

Mouser Electronics

Authorized Distributor

Click to View Pricing, Inventory, Delivery & Lifecycle Information:

Panduit:

[UTPCH3Y](#) [UTPKCH3BL](#)